



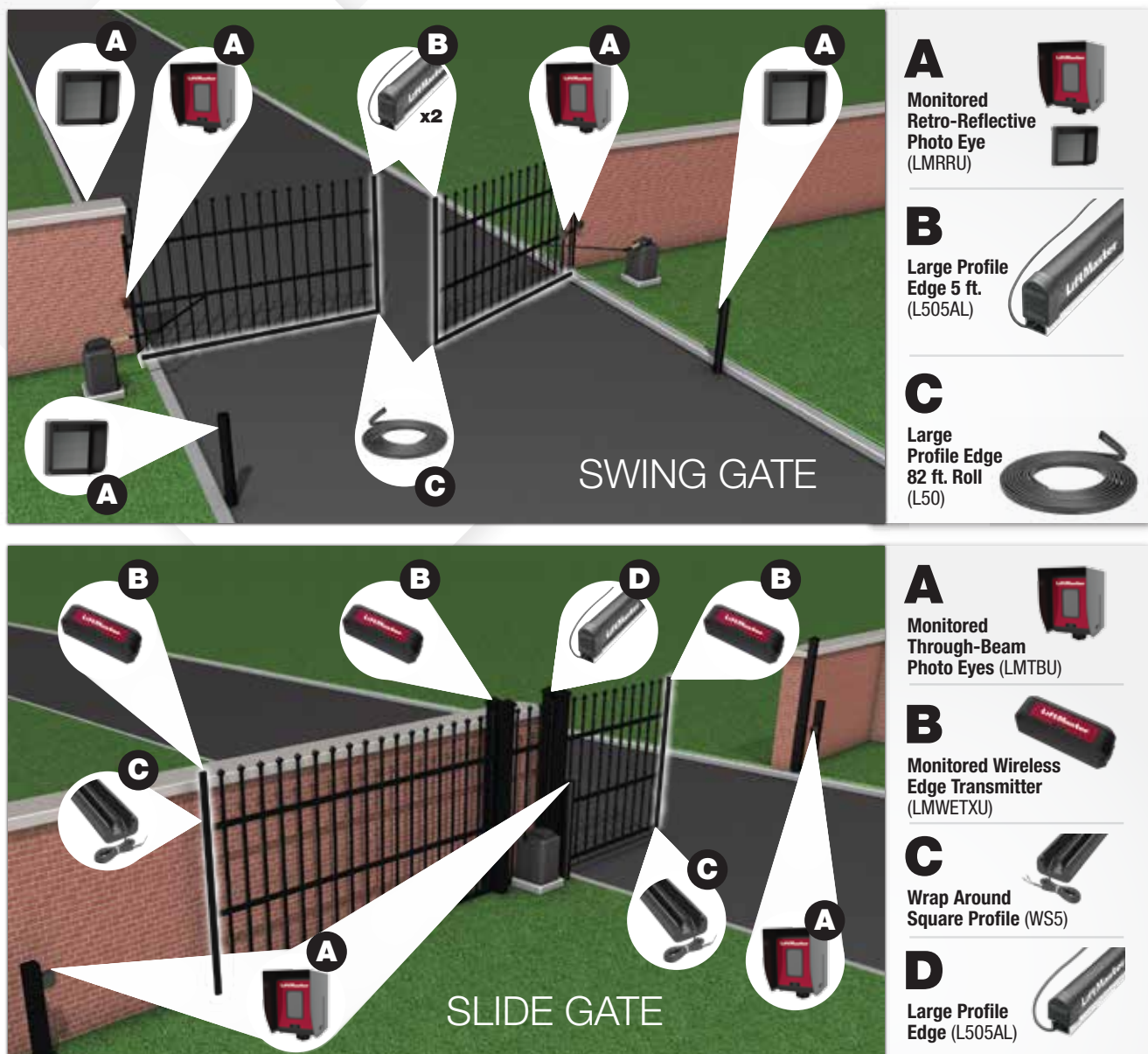
Total compliance.
Unmatched safety.
Proven reliability.

The LiftMaster® line of Monitored Safety Entrapment Protection Devices and Accessories ensures safety and compliance in every application.

LiftMaster®

Complete UL 325 safety entrapment protection compliance begins with LiftMaster®

A typical gate installation may require between 2-8 safety entrapment protection devices. That is why we have engineered a device for every possible entrapment zone, ensuring you have installed a safe and compliant gate system.



The above examples are two of many installation possibilities and are for illustrative purposes only. See device and operator manuals for complete installation instructions. Contact your LiftMaster Sales Representative to customize your site today.

LiftMaster®

Best-in-Class Features that are unique to LiftMaster® and make your installation simple

Photo Eyes

Designed and manufactured to deliver unrivaled performance and safety. LiftMaster® Monitored Photo Eyes are a trusted and reliable solution for protecting your common entrapment zones.



Monitored Retro-Reflective Photo Eye (LMRRU)

- Versatile solution for entrapment protection
- Long-range sensing distance of up to 50 ft.
- Antifogging lens provides increased reliability
- NEMA 4X
- Integrated diagnostics with 2016 UL 325 Gate Operators
- LED indicators (2) provide instant feedback – aligned, misaligned or blocked
- Stainless steel sensor hood, durable polycarbonate reflector hood, powdercoated galvanized mounting brackets, hardware and 6 ft. wire included
- Low power for solar applications
- Dimensions for sensor including the hood 4.9" H x 3" W x 3.7" D



Monitored Through-Beam Photo Eyes (LMTBU)

- Powerful design provides superior performance in a variety of tough environmental conditions
- Long-range sensing distance up to 90 ft.
- NEMA 4X
- Integrated diagnostics with 2016 UL 325 Gate Operators
- Stainless steel sensor hoods, powdercoated galvanized mounting brackets, hardware and 6 ft. wire all included
- Wireless network capability eliminates the need to wire between operators in dual-gate applications
- Low power for solar applications
- Dimensions for sensor including the hood 4.9" H x 3" W x 3.7" D

Note: Compatible with All LiftMaster® Gate Operators with burgundy boards ONLY. LMRRU Emitter is not interchangeable with LMTBU Emitter.

LiftMaster®



Wireless Edge Solution

Engineered for ultimate scalability in all environments, ensuring unmatched safety, reliability and installation flexibility.



Monitored Wireless Edge Kit (LMWEKITU)

- Reliable operation in virtually ALL environmental conditions
- Innovative industry-leading low-energy Bluetooth® technology is extremely power efficient. Two year battery life.
- Low power for solar appliances
- Multi-Channel Bluetooth transmission eliminates interference and provides up to 130 ft. range
- NEMA 4X
- Integrated diagnostics with 2016 UL 32 Gate Operators
- Low battery indicator
- High-capacity receiver accepts up to (4) edge transmitters and each transmitter accepts up to (2) wired edges
- Transmitter features 2 configurable open/close edge inputs
- Dimensions for receiver and transmitter 6.8" H x 2" W x 1.8" D



Monitored Wireless Edge Transmitter (LMWETXU)

- Ensures flexibility to expand protection of your system up to 8 entrapment zones
- Connects to edge receiver using low-energy Bluetooth transmission
- 2 Year battery life (includes (2) AA Lithium Batteries)
- Transmitter has two unique configurable open/close edge inputs for LiftMaster Monitored Resistive Edges

Additional Features Common to Photo Eyes and Wireless Edge Systems:

- Operating temperature -40°F to 149°F (-40°C to 65°C)
- Compatible with all LiftMaster Gate Operators with burgundy boards ONLY
- Each product has been UL tested and listed with 2016 UL 325 LiftMaster Gate Operators as a system
- Two Year Warranty

LiftMaster®



Monitored Edge Solutions for All Applications

A complete line of LiftMaster® Monitored Resistive Edges in different profile sizes and lengths for every unique application. The UL listed components provide external entrapment protection to meet 2016 UL 325 Standards, sending a signal to stop and/or reverse operation when sensing an obstruction. The product is compatible with wireless or hardwired gate applications and is IP65.

Factory Assembled Monitored Resistive Standard Edges in Aluminum Channel

Ideal for swing and slide commercial and residential gate applications to protect entrapment zones.

Large Profile

Dimensions: 1.8" H x 1" W



Large Profile Edge 4 ft. (L504AL)
Large Profile Edge 5 ft. (L505AL)
Large Profile Edge 6 ft. (L506AL)

Small Profile

Dimensions 1.2" H x 1" W



Small Profile Edge 4 ft. (S504AL)
Small Profile Edge 5 ft. (S505AL)
Small Profile Edge 6 ft. (S506AL)



Edge Cutting Tool (ET00L)

Ideal for any application that requires a custom length.

Factory Assembled Monitored Resistive Edges Wrap Around Style

Ideal for slide residential and commercial gate applications to protect entrapment zones.

Wrap Around Profile - Round

Dimensions: 1.2" H x 1" W for 1 5/8" – 2 3/8" round posts



Wrap Around Round Edge 4 ft. (WR4)
Wrap Around Round Edge 5 ft. (WR5)
Wrap Around Round Edge 6 ft. (WR6)

Wrap Around Profile - Square

Dimensions: 3.8" W x 2.6" H for 2 in. square posts



Wrap Around Square Edge 4 ft. (WS4)
Wrap Around Square Edge 5 ft. (WS5)
Wrap Around Square Edge 6 ft. (WS6)

Customize your own Monitored Resistive-Standard Edge

1. Choose the profile that fits your application needs



Large Profile Edge 82 ft. Roll (L50)
Small Profile Edge 82 ft. Roll (S50)

2. Pick the end caps



(Shown: L50E)

End Caps for L50 (10 pairs) (L50E)
End Caps for S50 (10 pairs) (S50E)

3. Select the mounting channel (Fits Large and Small Profile Edges)



Aluminum Channel 10 ft. (pack of 8) (L50CHAL)



Plastic Channel 8 ft. (pack of 10) (L50CHP)

Assemble edge within minutes with easy plug-in system, no glue is required.

LiftMaster®

2016 UL 325 Safety Standards – what you need to know:

- Two monitored safety entrapment protection devices must be installed at each entrapment point, including:
 - The inherent reversing system built in to each LiftMaster® Gate Operator
 - LiftMaster Monitored Photo Eyes and/or Edge Sensors
- Gate operators will now monitor for fault conditions of external safety entrapment protection devices
- New regulations went into effect January 2016

Only LiftMaster Monitored Photo Eyes or Edge Sensors may be used with LiftMaster Operators to meet the 2016 UL 325 Standards.

Installing safety and confidence are important aspects of your business. Designing a gate operator system that not only functions reliably, but also operates safely is essential.

Visit LiftMaster.com/UL325Gates for our expansive library of industry-leading UL 325 Gate and Accessory Support and Troubleshooting Videos to learn more about installing these systems.



©2016 LiftMaster. All Rights Reserved.
845 Larch Ave., Elmhurst, IL 60126

LiftMaster.com

LMGTBRACST 8/16

LiftMaster®